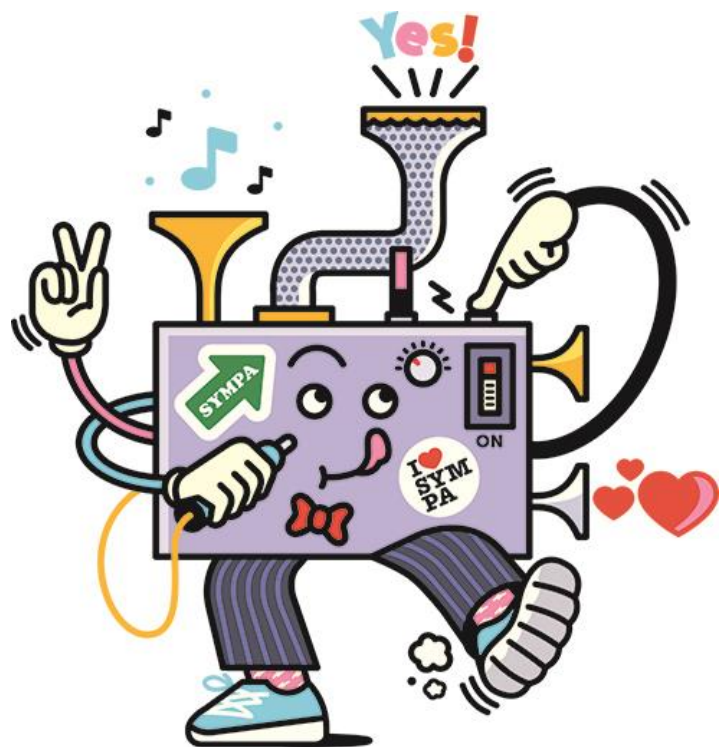




# SYMPA HR CONNECTORS

and integrations



## The center of your HR universe

Sympa HR offers simple integrations with other systems and gives you a clear view of all your people data. It's easy to plug in other software and IT solutions, whenever you need.

These are some of the connectors and integrations we have made for our customers.



## GLOBAL

- Active Directory
- Azure AD
- Basware Business Planning
- BizTalk
- Dear Lucy
- DocuSign
- Epicor
- Google Calendar
- InvoiceReady
- Lotus Notes
- M-Files
- Microsoft AX
- Moodle
- Mulesoft
- Nixu Personals
- Outlook Calendar
- Power BI
- Qlikview
- Quinyx
- SAP SuccessFactors
- Scrive
- Severa
- Tableau

### Missing your favourite?

We make new connectors and integrations based on our customers' unique needs.  
Ask us for more!

## THE NETHERLANDS

- Cowhills
- Ecare
- Exact globe
- Exact online
- NMBRS
- Relesys
- Storeforce
- Tamigo
- Timewize
- Werktijden-nl

## DENMARK

- Eloomi
- Visma Løn
- Lessor
- DataLøn
- Proløn
- Bridge

## SWEDEN

- &Frankly
- Agda
- Benify
- CGI POL
- Crona Løn
- Flexløn
- Hantverk
- HogiaLøn Plus
- Kontek
- Maconomy



## FINLAND

- CGI Palkat
- Cidtime
- Cognos
- Cranium
- CWT Travel
- E-Passi
- Eazybreak
- Efecte
- eFina
- Emce
- eTaika
- Evolvit
- Hedsam
- Hijat
- Innova
- iScala
- Jotbar
- Kieku
- L7
- Laura
- Lean
- Lyyti
- M2
- MaraPlan
- Megaflex
- Mehiläinen
- Mepco
- Mercur
- Norlic
- Numeron
- Optima
- Pegasos
- Personec F
- Personec W
- Powered
- Primus
- RM5
- Safea
- Sinfo
- Sirius
- Sonet
- TEM
- Terveystalo
- Tiima
- Tikon
- Timecon
- Timeplan
- TimeWize
- Työvuorovelho
- V10
- ValueFrame

*+ ask us for more!*

**Choose the best way for you to connect**  
via the Sympa HR API or prescheduled data transfers.